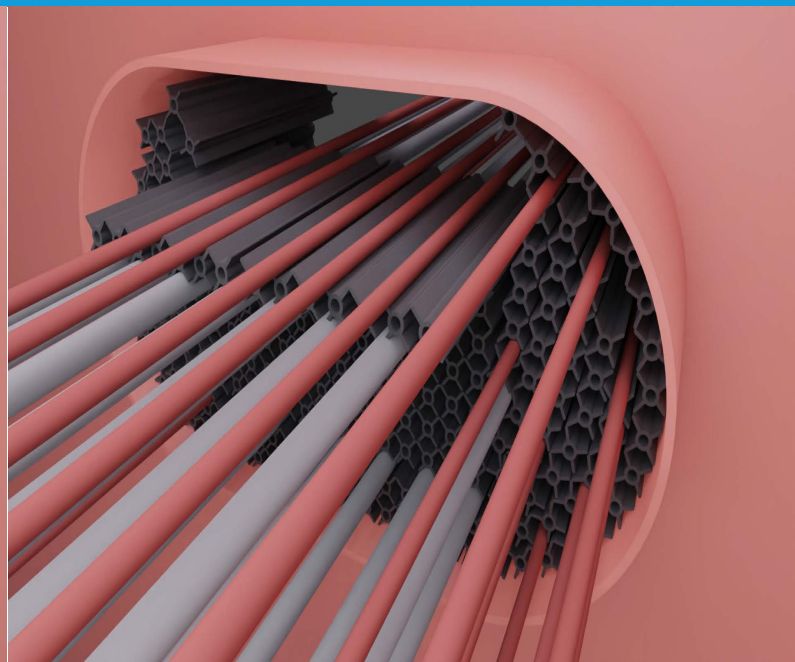
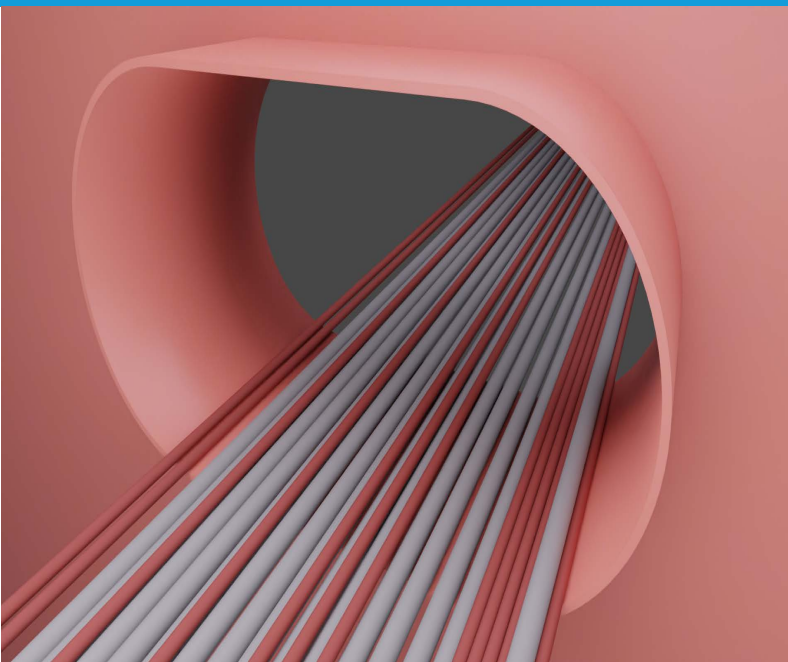


M.P.S. MULTIPLE PROFILE SYSTEM

The MPS-system, is the ideal fire resistant sealing system for cable and pipe penetrations

IMO A754(18) A0-A60

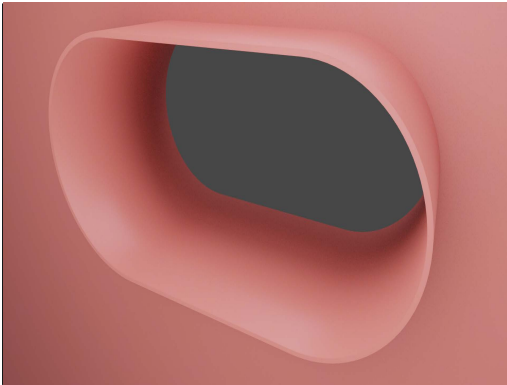


INDUSTRIAL . BUILDING . MARINE . OFFSHORE

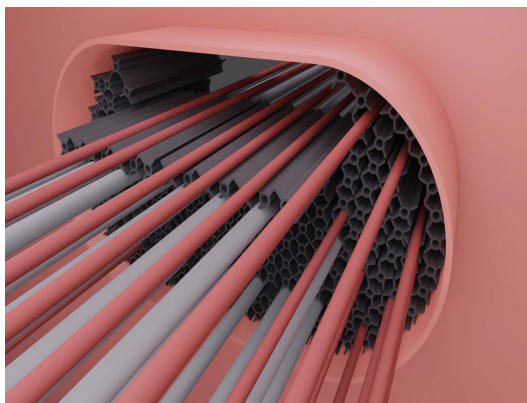
IBMO[®]

Multiple Profile System for cables.

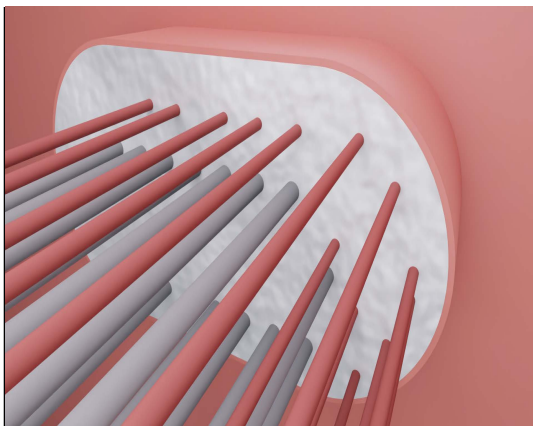
For BULKHEAD and Deck situations.



Make sure the conduit opening is clean from dirt, rust, oil and welding spots.

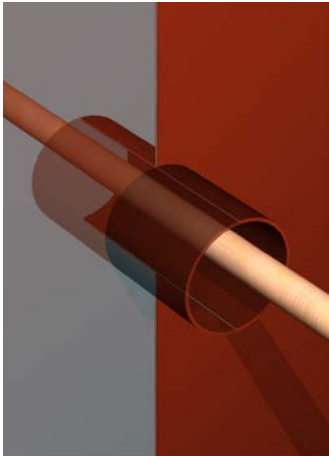


Fill the penetration with IBMO starclover profiles. Use the single profile or the multi strips profiles to fill. Leave 20mm space on each side of the coming.

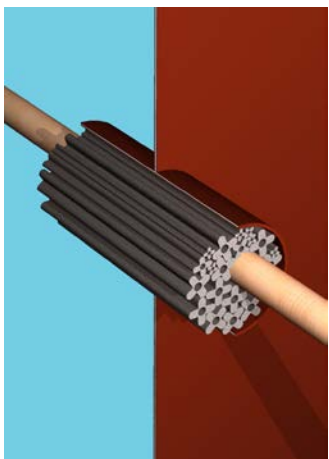


The space of 20mm must be filled with the IBMO pyro Putty. Make sure the surface is smooth. To create this use a water-and soap mixture. Use a wet sprayed hand to push the putty into gaps, small spaces between cables and to smoothen the surface. Now you have created a fire-, gas- and watertight penetration.

IBMO MPS (Multiple Profile System) for pipe penetrations Installation manual

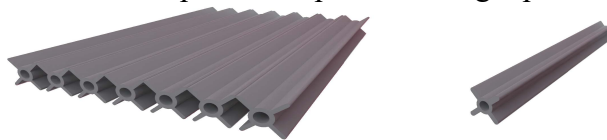


Pipe or cables can be installed through welded in pipe sleeve.

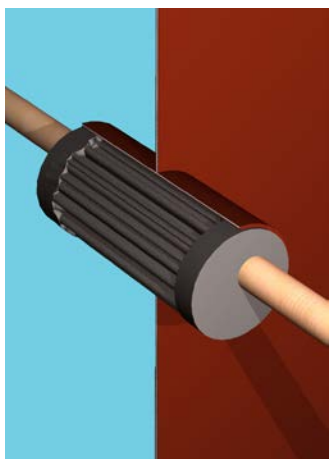


Fill the penetration with IBMO profiles.

Use the multi profile strips or our single profile



Leave 20mm space on each side of the coming to fill it up with the IBMO Sealing Mastic or Pyro Putty.



Then the penetration must be filled up with IBMO fire resistant sealing mastic or Pyro Putty and a fire and gastight penetration is created.

Instructions applying and smooting Pyro Putty with water and soap mixture

Please follow these steps carefully if you install the sealant in front of a penetration.

1. For large penetrations we advise to install one layer of putty at the time, 0,5-1,0 cm.
 - 1.1 Then fill up the penetration up to 2 cm with the putty
2. Than use a water from a plant spray with a mixture of water and a little bit of common soap.
3. Than Spray the putty wet everywhere.
4. Spray your hand with the soap mixture and make it very wet so the putty will not stick to your hand and fingers.
5. Make the penetration smooth with the wet hand, this will push the putty inside the profiles and make a smooth layer and prevent the putty to slide out of the penetration.
6. Follow the same steps until the complete penetration is filled up.