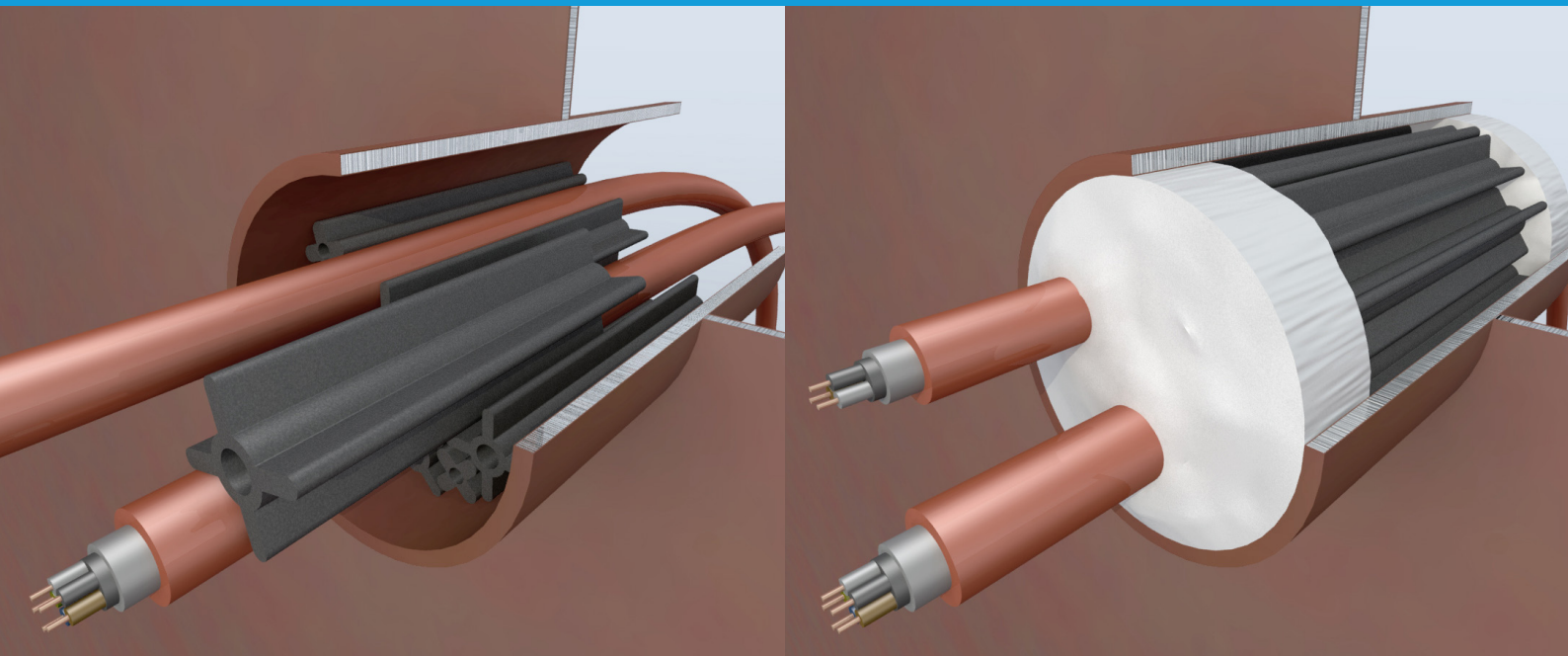


# M.P.S. MULTIPLE PROFILE SYSTEM

The MPS-system, is the ideal fire resistant sealing system for cable and pipe penetrations

IMO A754(18) A0-A60

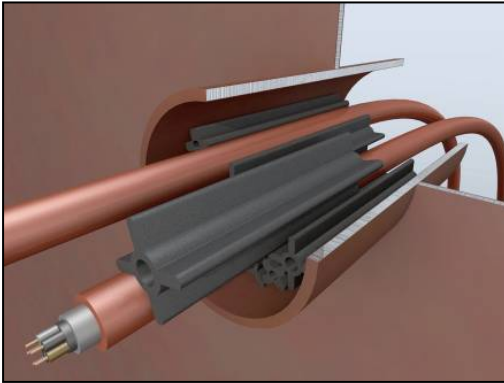


INDUSTRIAL . BUILDING . MARINE . OFFSHORE

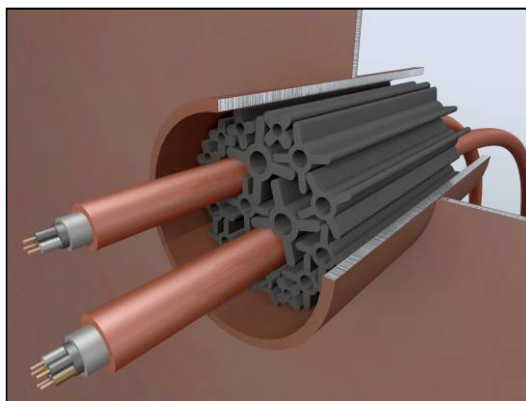
**IBMO**<sup>®</sup>

## Multiple Profile System for cables.

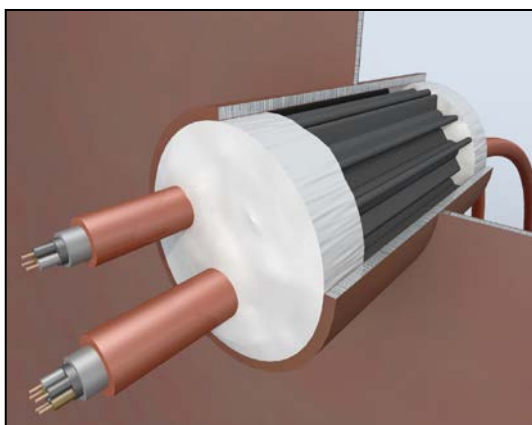
For BULKHEAD and Deck situations.



Make sure the conduit opening is clean from dirt, rust, oil and welding spots.



Fill the penetration with IBMO star/clover profiles. The length of the profiles depends on the length of the welded in conduit sleeve minus 40mm. Leave 20mm space on each side of the coming.

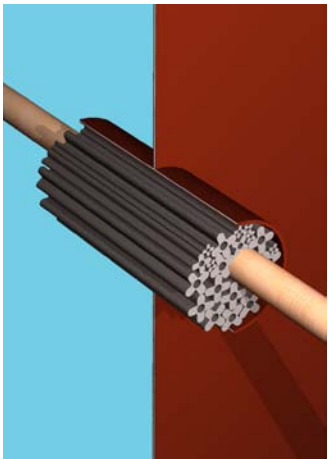


The space of 20mm must be filled with the IBMO pyro Putty. Make sure the surface is smooth. To create this use a water-and soap mixture. Use a wet sprayed hand to push the putty into gaps, small spaces between cables and to smoothen the surface. Now you have created a fire-, gas- and watertight penetration.

## IBMO MPS ( Multiple Profile System ) for pipe penetrations Installation manual

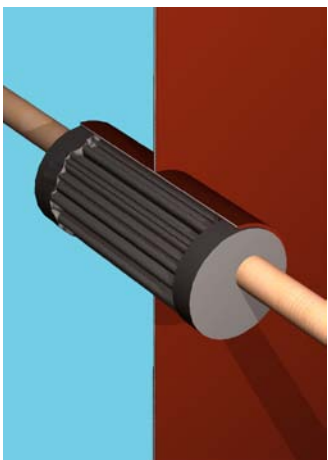


Pipe or cables can be installed through welded in pipe sleeve.



Fill the penetration with IBMO profiles.

The length of the profiles depends on the length of the welded in pipe sleeve minus 40mm. Leave 20mm space on each side of the coming to fill it up with the IBMO Sealing Mastic or Pyro Putty.



Then the penetration must be filled up with IBMO fire resistant sealing mastic or Pyro Putty and a fire and gastight penetration is created.

**Please follow these steps carefully if you install the sealant in front of a penetration.**

- 1. Install one layer of sealant at the time, for instance 0,5-1,0 cm.**
- 2. Than use a plant spray with a mixture of water and a little bit of common soap.**
- 3. Than spray the sealant wet everywhere.**
- 4. Spray your hand with the soap mixture and make it very wet so the sealant will not stick to your hand and fingers.**
- 5. Make the penetration smooth with the wet hand, this will push the sealant inside the profiles and make a smooth layer and prevent the sealant to slide out of the penetration.**
- 6. Follow the same steps until the complete penetration is filled up.**