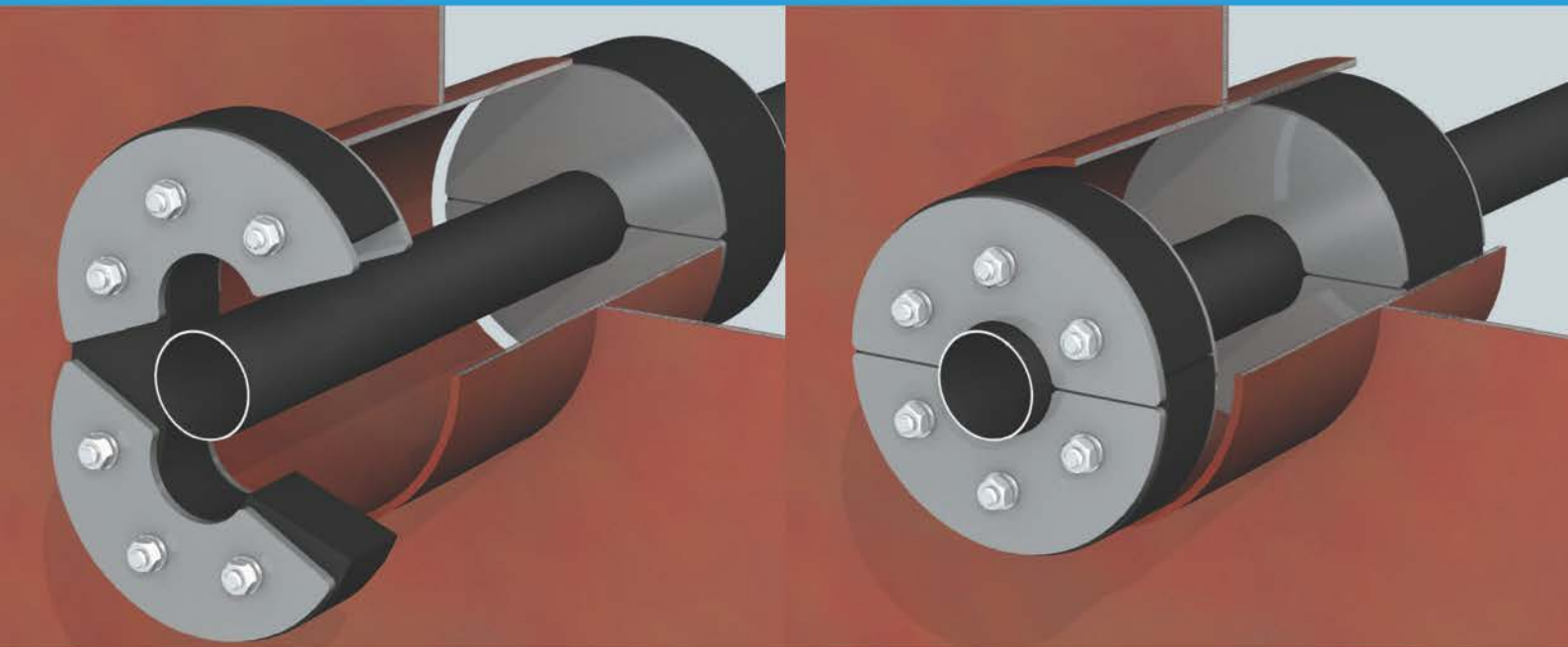


Installation Manual

H.P.S. FIRE SEAL

The ultimate fire resistant sealing
system for pipe penetrations

IMO A754(18) A0-A60



INDUSTRIAL . BUILDING . MARINE . OFFSHORE

IBMO[®]

HPS Fire Seals Installation manual

- Make sure the surface of the core bearing / casing-pipe or carrier-pipe in the installation area is clean.
- Check the carrier-pipe for centric adjustments. Even if the Fire Seal is made of high quality materials, it does not allow however the function as support-bar of the carrier-pipe.
- Make sure the HPS Fire Seal is installed approx. 2cm inside the sleeve, nuts to the outside which allows easy access after finishing the installation, i.e. of retightening in case of setting conditions.
- Push the seal completely into the annular space (Installation will be improved by moisten the elastomer parts and/or the inner and outer surfaces i.e. by using soap-water, **(no lubricants)**).
- Tighten all nuts in clockwise direction (**not crosswise!**) with the same number of turns at the time until the entire space is completely filled up with the rubber element and the Fire Seal fits against inner and outer surface.
- Tighten the screws clockwise by using a torque-wrench with the recommended torque(see table).
- Due to possible setting after approx. 2 hrs. check the torque (for a pressure-tight sealing after 48 hrs.) if necessary adjust.

Bolt-size	Wrench-size	Torque
M5	8	3 Nm
M6	10	8 Nm
M8	13	12 Nm
M10	17	25 Nm

Rubber quality: EPDM

All steel parts: pressure plates/bolts and nuts are made of stainless steel.