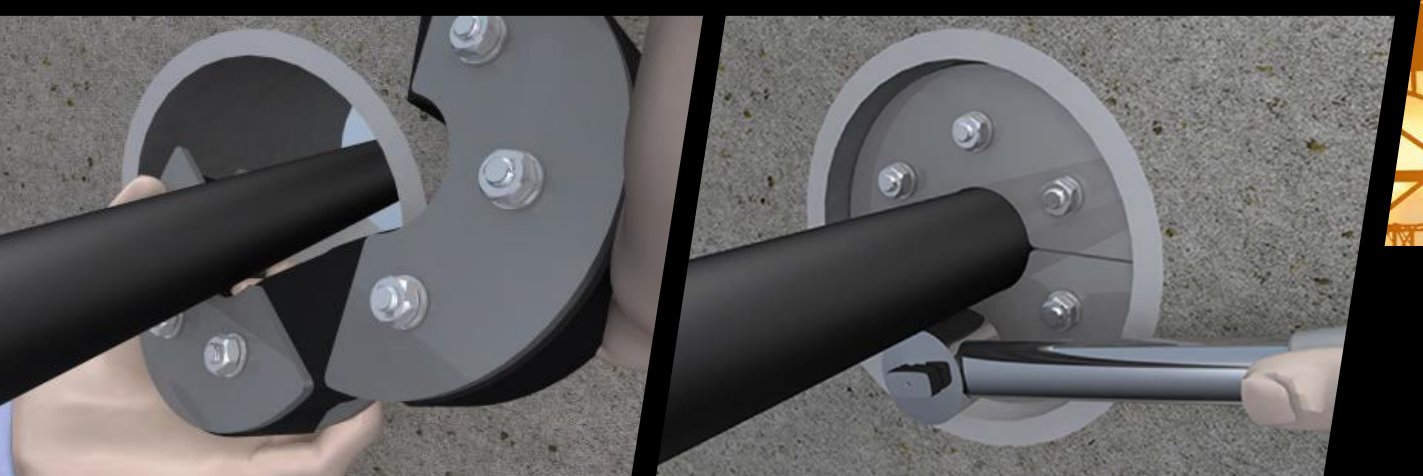


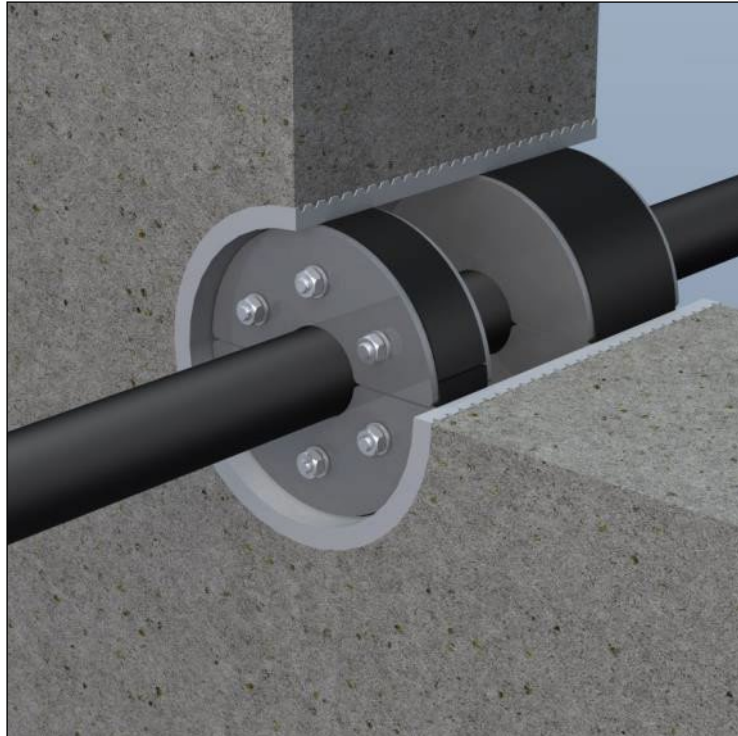
Pressure seals



The gas- and watertight seal that is available in any desired size.



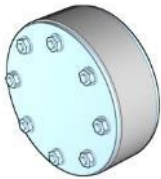
Watertight up to 6 bar



Functionality: for pipe and cable



Pressure seal single-layer blind plug



Pressure seal double-layer blind plug



Pressure seal single-layer closed version



Pressure seal single-layer, open version



Pressure seal double-layer closed version



Pressure seal double-layer open version

For cables and pipes

- Available in single-layer rubber for seals exposed to intermittent water pressure.
- Available in double-layer rubber for situations involving constant water pressure.
- All metal parts are made of A2 stainless steel.
- The pressure seal is suitable for use in both high-rise and low-rise buildings, as well as in underground construction projects (related to electricity, gas, and water supply).
- Multiple cables or pipes can be routed through a single pressure seal. (Price available upon request.)

The pressure seals are available as standard in diameters ranging from 60 to 500 mm.*

Installation:

- A sealed version is available when the pressure seal is installed at the same time as the main installation work.
- Can be retrofitted after cables have been run or pipes have been installed.
- For retrofitting, the hinged version is required.
- Gas-tight up to 4 bar and water-tight up to 6 bar.
- Sound-insulating and shock-absorbing.
- For pipes 110 mm and larger, we recommend installing a seal on both sides.
- Corrosion-resistant.
- Available as a special seal for thin-walled plastic pipe, insulated pipe, and corrugated flexible pipe.
- **Greater efficiency thanks to quick installation.**

Pressure Seal single layer closed version

Inside diameter drill-hole or casing tube	Maximum outside diameter pipe or cable size	Product Code
60mm	Max. 22mm	HDA 60/1/...
70mm	Max. 35mm	HDA 70/1/...
80mm	Max. 45mm	HDA 80/1/...
100mm	Max. 66mm	HDA 100/1/...
125mm	Max. 87mm	HDA 125/1/...
150mm	Max. 112mm	HDA 150/1/...
200mm	Max. 162mm	HDA 200/1/...
250mm	Max. 212mm	HDA 250/1/...
300mm	Max. 260mm	HDA 300/1/...
350mm	Max. 300mm	HDA 350/1/...
400mm	Max. 350mm	HDA 400/1/...
450mm	Max. 400mm	HDA 450/1/...
500mm	Max. 450mm	HDA 500/1/...



Pressure Seal single layer open version

Inside diameter drill-hole or casing tube	Maximum outside diameter pipe or cable size	Product Code
60mm	Max. 22mm	HDA 60/G/1/...
70mm	Max. 35mm	HDA 70/G/1/...
80mm	Max. 45mm	HDA 80/G/1/...
100mm	Max. 66mm	HDA 100/G/1/...
125mm	Max. 87mm	HDA 125/G/1/...
150mm	Max. 112mm	HDA 150/G/1/...
200mm	Max. 162mm	HDA 200/G/1/...
250mm	Max. 212mm	HDA 250/G/1/...
300mm	Max. 260mm	HDA 300/G/1/...
350mm	Max. 300mm	HDA 350/G/1/...
400mm	Max. 350mm	HDA 400/G/1/...
450mm	Max. 400mm	HDA 450/G/1/...
500mm	Max. 450mm	HDA 500/G/1/...



* Different sizes on request, all sizes **smaller than the maximum** outer pipe or cable diameter are possible to produce.

Order Example: Suppose you have a hole of Ø200mm and a pipe of Ø125mm
 You order these as follows:
 Closed version: **HDA 200/1/125**
 Open version: **HDA 200/G/1/125**

Pressure Seal double layer closed version

Inside diameter drill-hole or casing tube	Maximum outside diameter pipe or cable size	Product Code
60mm	Max. 22mm	HDA 60/2/...
70mm	Max. 35mm	HDA 70/2/...
80mm	Max. 45mm	HDA 80/2/...
100mm	Max. 66mm	HDA 100/2/...
125mm	Max. 87mm	HDA 125/2/...
150mm	Max. 112mm	HDA 150/2/...
200mm	Max. 162mm	HDA 200/2/...
250mm	Max. 212mm	HDA 250/2/...
300mm	Max. 260mm	HDA 300/2/...
350mm	Max. 300mm	HDA 350/2/...
400mm	Max. 350mm	HDA 400/2/...
450mm	Max. 400mm	HDA 450/2/...
500mm	Max. 450mm	HDA 500/2/...


Pressure Seal double layer open version

Inside diameter drill-hole or casing tube	Maximum outside diameter pipe or cable size	Product Code
60mm	Max. 22mm	HDA 60/G/2/...
70mm	Max. 35mm	HDA 70/G/2/...
80mm	Max. 45mm	HDA 80/G/2/...
100mm	Max. 66mm	HDA 100/G/2/...
125mm	Max. 87mm	HDA 125/G/2/...
150mm	Max. 112mm	HDA 150/G/2/...
200mm	Max. 162mm	HDA 200/G/2/...
250mm	Max. 212mm	HDA 250/G/2/...
300mm	Max. 260mm	HDA 300/G/2/...
350mm	Max. 300mm	HDA 350/G/2/...
400mm	Max. 350mm	HDA 400/G/2/...
450mm	Max. 400mm	HDA 450/G/2/...
500mm	Max. 450mm	HDA 500/G/2/...



* Different sizes on request, all sizes **smaller than the maximum** outer pipe or cable diameter are possible to produce.

Order Example:	Suppose you have a hole of Ø200mm and a pipe of Ø125mm
	Closed version: HDA 200/2/125
	Open version: HDA 200/G/2/125

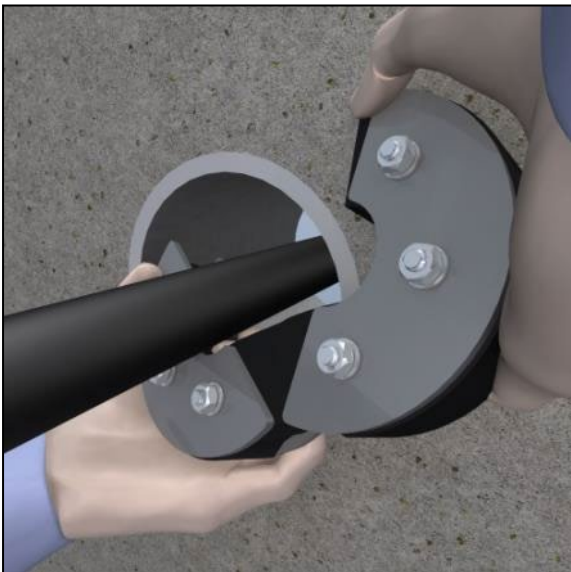
Pressure Seal Installation method



1



2



3



4

Pressure Seal

Installation method

- Make sure that the casing tube or the drill-hole is clean and free of sharp edges
- Mount the seal in such a way that you can always reach it afterwards to tighten it further if necessary.
- Now slide the seal inside the penetration. If this is difficult, you can use a mixture of water and soap. (no lubricants.)
- Now tighten all nuts clockwise until no more open space is visible between the seal and the penetration, drill-hole.
- Now further tighten the bolts, using a torque spanner. Note the table below for the recommended force per bolt/nut.
- Check the seal after 24 hours to make sure the bolts are still tight. Tighten further if necessary.

Bolt	Cap size	Force
M5	8	3 Nm
M6	10	8 Nm
M8	13	12 Nm
M10	17	25 Nm